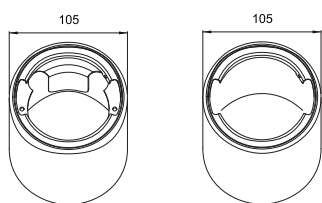
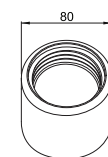




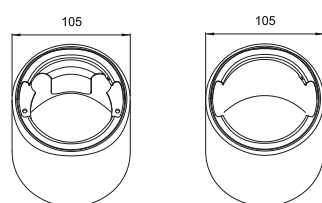
KOCKÒN varastamisvastased paagisõelad



| | | |
|------------------|----------------|---|
| Tootekood | Nimetus | Sobivus |
| 58 03 20 045 | KOCKÒN 105 | Sobib kütusepaakidele augu läbimõõduga 105 mm |

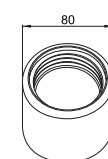


| | | |
|------------------|-----------------------|--|
| Tootekood | Nimetus | Sobivus |
| 58 16 20 020 | KOCKÒN 80 Scania-tüüp | FSisekeermega paakidele augu läbimõõduga - 80 mm - SCANIA 4-seeria |



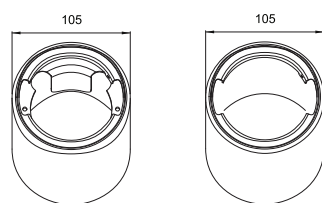
NB: Komplekt sisaldab korki

| | | |
|------------------|------------------------------|---|
| Tootekood | Nimetus | Sobivus |
| 58 16 23 045 | Madala profiiliga KOCKÒN 105 | Sobib kütusepaakidele augu läbimõõduga 105 mm |

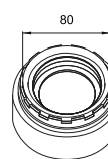


NB: Komplekt sisaldab korki

| | | |
|------------------|-----------------------------|---|
| Tootekood | Nimetus | Sobivus |
| 58 16 23 020 | Madala profiiliga KOCKÒN 80 | Sisekeermega paakidele augu läbimõõduga 80 mm - SCANIA 4-seeria |

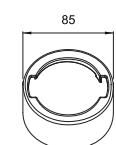


| | | |
|------------------|---------------------------|--|
| Tootekood | Nimetus | Sobivus |
| 58 16 21 045 | KOCKÒN 105 - baasversioon | Sobib plastikust paakidele augu läbimõõduga 105 mm |



NB: Komplekt sisaldab korki

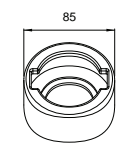
| | | |
|------------------|--------------------------|--|
| Tootekood | Nimetus | Sobivus |
| 58 16 26 020 | KOCKÒN 80 Eurocargo-tüüp | Sisekeermega plastikpaakidele augu läbimõõduga 80 mm - EUROCARGO-tüüpi |



| | | |
|------------------|----------------|--|
| Tootekood | Nimetus | Sobivus |
| 58 16 20 040 | KOCKÒN 85 | Standardmõõdus avaga paakidele - Ø 85 mm |



| | | |
|------------------|--------------------------|--|
| Tootekood | Nimetus | Sobivus |
| 58 16 28 020 | KOCKÒN Lamberet SR1-tüüp | LAMBERET SR1 - MIDLUM RENAULT tüüpi plastikpaakidele |



| | | |
|------------------|-----------------------------|--|
| Tootekood | Nimetus | Sobivus |
| 58 16 27 040 | KOCKÒN 85 - Thermoking tüüp | Plastikust paakidele augu läbimõõduga 85 mm - THERMOKING tüüpi |



| | | |
|------------------|---------------------|----------------------|
| Tootekood | Nimetus | Sobivus |
| 58 19 32 031 | KOCKÒN 66 bussidele | IRISBUS IVECO, TEMSA |

